
Tracking the Wily CRF

Craig A. Magaret
Statistical Center For HIV/AIDS Research and Prevention

SCHARP Receives ...

- ... about 15,000 CRFs weekly
- ... CRFs from over 60 sites across five continents
- ... about 75% of all CRFs via internet

CRF Transmission

- Fax machines transmit CRFs to SCHARP via telephone or internet (email)



Problems May Arise Due To ...

- Mechanical failures
- Operator error
- Connection problem
 - Faulty line
 - Internet Service Provider (ISP) problem
 - Network configuration errors
- SCHARP system problem

Why Track CRFs?

- Resolve problems before they become critical
- Get a better site-wide dataflow overview
- “We thought we faxed that.”
- Increase involvement with sites

Hence a CRF-Tracking System

- Faxes are sent in as “bundles” of CRFs
- A cover sheet is added to each bundle
- The cover sheet provides a unique “tracking number” to identify the bundle
- System has two distinct stages

Stage 1

- **E-mail notification upon receipt of CRFs**

When the cover sheet is processed by DataFax, an e-mail message is sent to a designated correspondent.

E-mail message includes time received, number of pages, tracking number, and contact information.

The notification should be received by the site within 5 minutes to 24 hours (depending on site configuration).

Stage 2

- **Ongoing progress reports via SCHARP's CRFtrack Web site**

Analogous to FedEx or UPS Web sites

After entering the tracking number, the current status of the individual CRFs (within the fax bundle) will be displayed

Chart the progress of the CRFs over time

Any CRFs not received and processed by SCHARP will be missing from the report

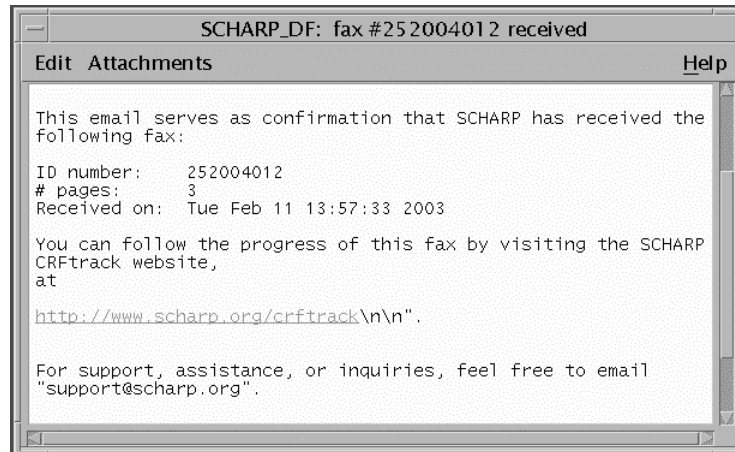
Behold, the Cover Sheet

- Features a human-readable tracking ID
- Can assist in record-keeping and filing at sites
- Room for additional notes
- Will be retained at SCHARP as image files

Cover Sheet Anatomy

- A separate study (252) is used for the CRF-tracking system
- Different plates are distributed to different sites and act as indicators of the sender
- Sequence number acts as the “page number” within the set of plates
- Together, all three numbers create a unique tracking number

E-mail Confirmation



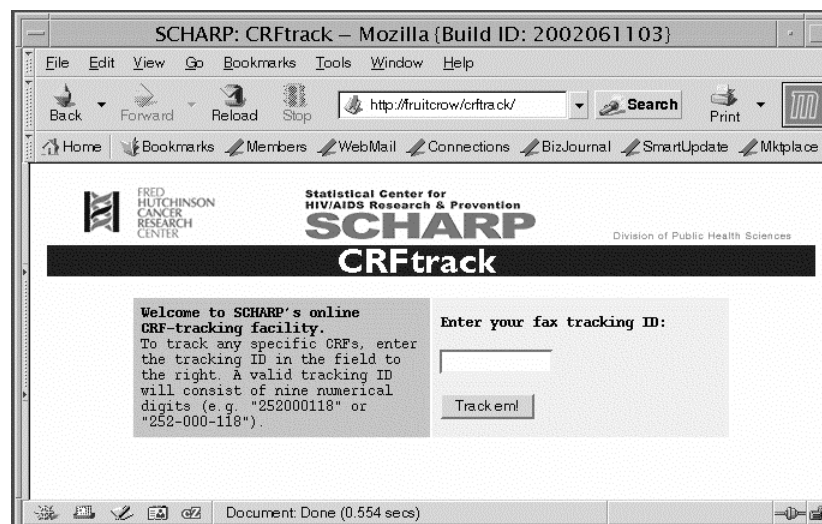
It works by ...

- Because the plate number is assigned to a specific site, we can determine which site has sent us the cover sheet
- Within the study setup, a Perl program (rxConfirm.pl) runs as a post-process
- rxConfirm.pl uses a configuration file to match the cover sheet's plate number with an e-mail address, and sends the confirmation

rxConfirm.pl Log File

- rxConfirm.pl keeps a log file, rx_log
 - Used for administrative purposes
 - Used later with the web site
- rx_log format:
datetime|siteID#|imageID#|trackingID#|#pages|coverpage#
e.g. 11/02/2003:13:57:46|004|0306/1144|252004012|3|001
- rxConfirm.pl gleans some information from DataFax's fax_log (number of pages and receive date)

The CRFtrack Web Site



The CRFtrack Web Site

CRFtrack – Mozilla (Build ID: 2002061103)

File Edit View Go Bookmarks Tools Window Help

Back Forward Reload Stop <http://fruitcrow/cgi-bin/crftrack/track.pl> Search Print

Home Bookmarks Members WebMail Connections BizJournal SmartUpdate Mktplace

CRF TRACK

Tracking Number: 252004046
Total Pages: 7

Page #	Study #	ptid	Plate #	Visit #	Validation Level	Status	Created	Modified
1	Cover Sheet							
2	HPTN033	663002724	161	3	3	Clean	02/11/03 09:30:50	02/11/03 09:30:50
3	HPTN033	663002724	121	3	3	Clean	02/11/03 09:31:15	02/11/03 09:31:15
4	HPTN033	663002724	122	3	3	Clean	02/11/03 09:31:30	02/11/03 09:31:30
5	HPTN033	663002724	123	3	3	Clean	02/11/03 09:31:59	02/11/03 09:31:59
6	HPTN033	663002724	125	3	3	Clean	02/11/03 09:32:23	02/11/03 09:32:23
7	HPTN033	663002724	126	3	3	Clean	02/11/03 09:32:54	02/11/03 09:32:54

Document: Done (0.294 secs)

Web Site Underpinnings

- The web-accessible data is compiled, continuously, into a flat-file (pipe-delimited) database via edit check
- The CGI gets the entry in rx_log that corresponds to the tracking number
- We call the data pertaining to the unique image ID in the database file
- Data is formatted, translated (if necessary) and presented as HTML

Current Progress

- **Stage 1 (E-mail notification)**
 - Completed
 - Being field-tested by four sites
- **Stage 2 (Web site)**
 - Nearing completion for implementation on selected studies
 - Field-testing to begin April 2003
- **Policy Issues: In progress**